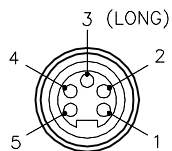
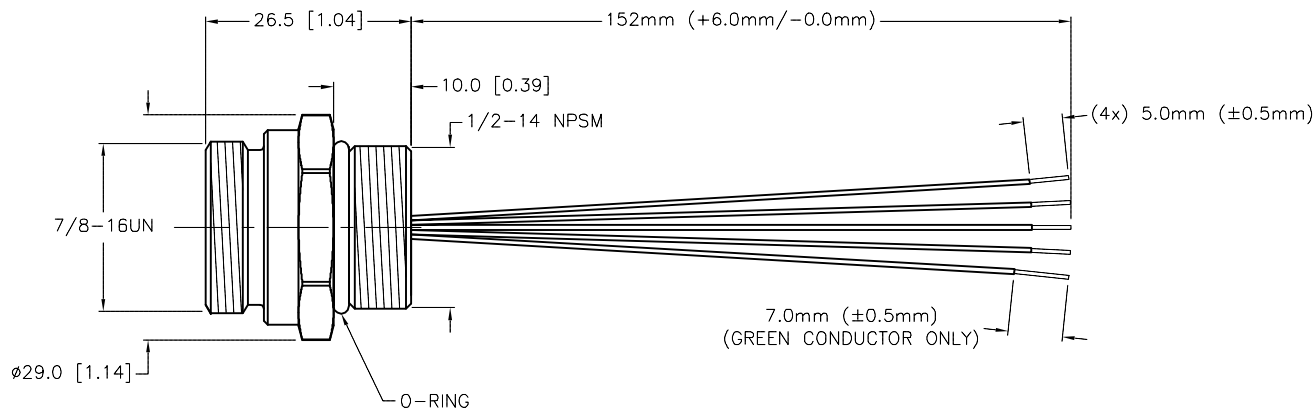
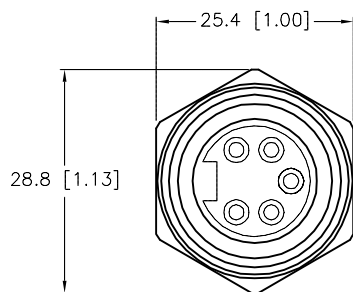


MALE END VIEW



1 = WHITE
2 = RED
3 = GREEN/YELLOW
4 = ORANGE
5 = BLACK



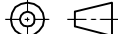
SPECIFICATIONS

CONTACT CARRIER MATERIAL	TPU
CONTACT MATERIAL/PLATING	BRASS/GOLD
HOUSING MATERIAL/COLOR	ANODIZED ALUMINUM/BLACK
O-RING MATERIAL	BUNA-N (NITRILE)
RATED CURRENT [A]	10.0 A
RATED VOLTAGE [V]	300 V
CONDUCTOR INSULATION MATERIAL	PVC
NUMBER OF CONDUCTORS [AWG]	5x20 AWG
TEMPERATURE RATING	-40°C to +80°C (-40°F to +176°F)
PROTECTION CLASS	MEETS NEMA 1,3,4,6P AND IEC IP67

NOTES:

1. "/S1541" DESIGNATES SPECIAL LENGTHS AND TOLERANCE. LENGTH OF LEADS FROM BACK OF RECEPTACLE EQUALS 152MM (+6MM/-0). STRIP 5MM (±0.5MM) FOR ALL CONDUCTORS EXCEPT GREEN. GREEN STRIP IS 7MM (±0.5MM). 20 AWG CONDUCTORS, 16 AWG COLOR CODE. LEADS NOT TINNED. MODIFIED NPT ALUMINUM HOUSING.

SOURCE DRAWING - FOR REFERENCE ONLY

RELATED DOCUMENTS 1. 2. 3. 4.	3RD ANGLE PROJECTION	<div>THIS DRAWING IS CONFIDENTIAL AND THE PROPERTY OF TURCK INC. USE OF THIS DOCUMENT WITHOUT WRITTEN PERMISSION IS PROHIBITED.</div> <div>TURCK</div> <div>3000 CAMPUS DRIVE MINNEAPOLIS, MN 55441 1-800-544-7769 (763) 553-7300 (763) 553-0708 fax www.turck.us</div>				
						
	MATERIAL					
	ALUMINUM					
FINISH	ALL DIMENSIONS DISPLAYED ON THIS DRAWING ARE FOR REFERENCE ONLY CONTACT TURCK FOR MORE INFORMATION	DRFT CBM	DATE 08/17/99	DESCRIPTION RSF 56-0.15/S1541		
BLACK ANODIZED		APVD	SCALE 1=1.0			
			UNIT OF MEASUREMENT MILLIMETER [INCH]		IDENTIFICATION NO. U2309-01	REV E
			DO NOT SCALE THIS DRAWING		FILE: U2309-01	SHEET 1 OF 1

E	CHANGE GREEN CONDUCTOR TO GREEN/YELLOW	RDS	08/21/18	66549
REV	DESCRIPTION	BY	DATE	ECO. NO.